

NUANCE

The experience speaks for itself™

DATASHEET

eCopy® Cost Recovery Extender™

Track scanning activity and recover costs to improve business results

The eCopy Cost Recovery Extender works with vendors of cost recovery applications to track, manage, and assign costs associated with activities such as scanning, faxing, printing, and e-mailing at the scanning device. Username, Password, Filename, Matter, Client, and Billing Code information can be passed directly from Cost Recovery applications to eCopy ShareScan® and its Connectors to be applied directly to scanning workflows without the need to re-enter data.

- Tracks and recovers costs for scanned paper documents enabling companies to “charge back” associated costs
- Tracks and assigns costs specific to destination (i.e. fax, e-mail, document management system, etc.) providing a detailed report on scanning usage
- Transfers all document costs to Time and Billing packages for client billing
- Works with leading cost recovery vendors

The eCopy Cost Recovery Extender works with a company’s existing cost recovery system.



To use eCopy, the user simply places the paper document in the digital copier’s paper tray, and selects an eCopy option.

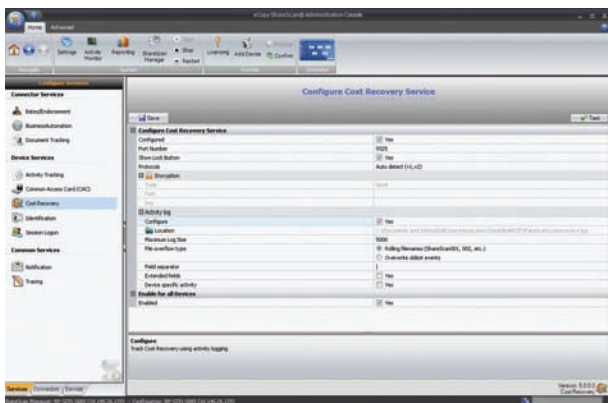
Scanning options include sending to the user’s desktop, network fax, e-mail, or back end enterprise application.

- Enter and validate tracking information
- Scan the documents using eCopy
- Collect and log the necessary tracking and cost recovery information for the scanning activity with eCopy



Cost Recovery System

Scanned paper is e-mailed, faxed, or delivered to your chosen destination, while scanning and tracking data is sent to your Cost Recovery System



eCopy ShareScan's Administration Module is used to enable "Cost Recovery" and to complete setup details.

System Requirements

- eCopy ShareScan® v5.0

Compatible with Cost Recovery Systems

- Billback
- Copitrak
- Equitrac
- nQueue
- Print Audit
- Sepialine

For the latest supported platforms for eCopy ScanStation™ and eCopy ShareScan, please visit:

www.ecopy.com/support/platforms.htm

© 1995–2010 Nuance Communications, Inc. All rights reserved. Nuance, the Nuance logo and eCopy are trademarks or registered trademarks of Nuance Communications, Inc. and/or its affiliates in the United States and/or other countries.

Page 1 of 11

Cost Recovery System

Date Range
From: August 1, 2007 12:00:00 AM
TO: February 13, 2008 11:50:00 PM

0600000-00010 Copitrak / eCopy

Copy Transaction(s)					
User Name	Date	Time	Destination	Pages	Gross Charges
John Doe	09/05/2007	14:25		5	5.00
John Doe	09/05/2007	14:27		5	5.00
John Doe	09/05/2007	14:27		7	7.00
John Doe	09/05/2007	13:45		10	10.00
John Doe	09/05/2007	13:45		11	11.00
John Doe	09/05/2007	13:47		20	20.00
John Doe	09/05/2007	13:47		23	23.00
John Doe	09/05/2007	13:42		5	5.00

Scan and Mail Transaction(s)					
User Name	Date	Time	Destination	Pages	Gross Charges
John Doe	10/10/2007	14:25	Morgan; Kelly	1	1.00
John Doe	10/11/2007	14:27	Morgan; Kelly	1	1.00
John Doe	10/11/2007	14:27	Morgan; Kelly; Rogers	1	1.00
John Doe	10/12/2007	13:45	Morgan; Kelly	1	1.00
John Doe	10/12/2007	13:45	Morgan; Kelly	1	1.00
John Doe	10/12/2007	13:47	Peterson; Majorie	2	2.00

Scan To Desktop Transaction(s)					
User Name	Date	Time	Destination	Pages	Gross Charges
John Doe	12/08/2007	13:25	eCopy Scan	1	1.00
John Doe	12/08/2007	13:27	eCopy Scan	13	13.00
John Doe	12/08/2007	14:27	eCopy Scan	2	2.00
John Doe	12/12/2007	14:50	eCopy Scan	2	2.00
John Doe	12/12/2007	14:57	eCopy Scan	2	2.00
John Doe	12/12/2007	18:47	eCopy Scan	2	2.00
John Doe	12/08/2007	14:27	eCopy Scan	2	2.00
John Doe	12/12/2007	14:50	eCopy Scan	2	2.00
John Doe	12/12/2007	14:57	eCopy Scan	2	2.00
John Doe	12/12/2007	18:47	eCopy Scan	2	2.00
John Doe	09/05/2007	13:45	eCopy Scan	11	11.00
John Doe	09/05/2007	13:45	eCopy Scan	10	10.00

All captured scanning activity is sent to your cost recovery system and included in any reports the system generates.