

NUANCE

The experience speaks for itself™

DATASHEET

eCopy Connector for Canon® iW Document Manager

Directly access Canon iW Document Manager from ShareScan-enabled scanning devices

With the eCopy Connector for Canon iW Document Manager, hard copy documents are quickly converted into digital files to be stored in Canon's iW Document Manager. Document indexing information (such as type and format) and any Canon iW Document Manager specific attributes are input at the Canon imageRUNNER device using an eCopy-enabled solution. Documents can be sent directly to the specified folder within Canon iW Document Manager for storage where it is immediately available for retrieval by authorized iW Document Manager users.

The eCopy Connector for Canon iW Document Manager enables ShareScan users to scan paper documents into Canon iW Document Manager helping organizations simplify the capture, management, and distribution of documents for complete efficiency.

Now, Canon iW Document Manager users can easily include paper documents in their digital workflows and supporting document lifecycle management processes. The eCopy Connector for Canon iW Document Manager is directly integrated with Canon iW Document Manager functions, assuring customers that eCopy-created image files will be stored, indexed and managed consistent with their existing content management procedures.

Features and Benefits

- Leverage existing document management system investment
- Validate users at the device
 - Create an electronic audit trail
 - Conform to corporate security policies: *Sarbanes Oxley, HIPAA*
- Integrate dynamically with Canon iW Document Manager
 - Reflect unique user permissions and preferences
 - Consistent user interface and workflow reduces training time
 - Supports highly customized environments
- Lower total cost of ownership
 - Server modifications automatically reflected at each device in real time
- Highly flexible configuration allows the creation of multiple buttons with specific destinations and indexes that coincide with your business needs
 - Making it as simple as one-touch storing
- Profile documents completely from an eCopy-enabled device with minimal typing
- Improve workgroup collaboration

Index Fields

Title: Document title

Author: Forest

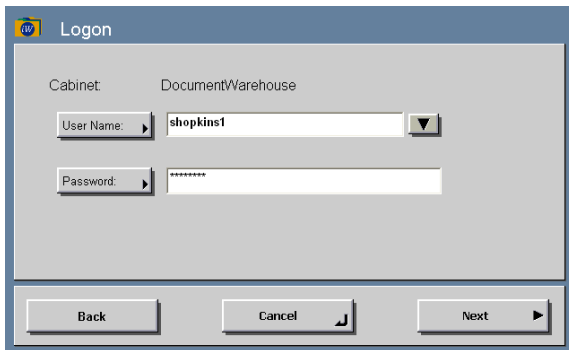
Tracking Number: 123

Final Draft: True

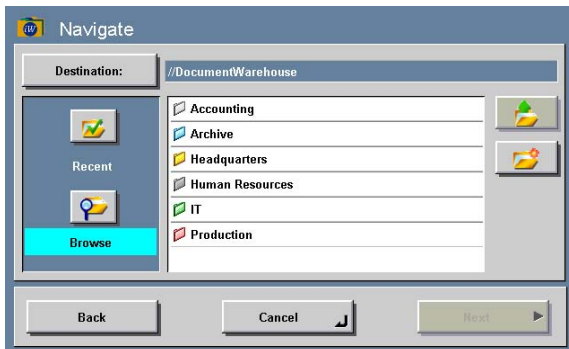
Page 1 of 2

Back Cancel Send

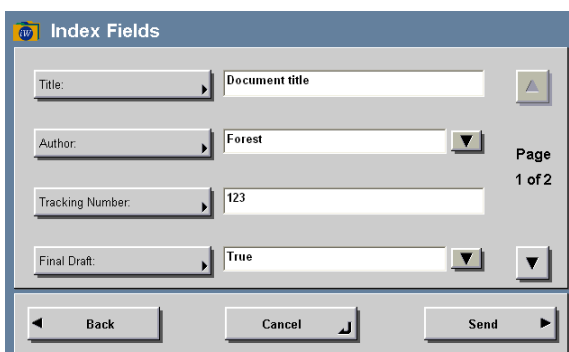
Add required document indexing information at the copier just as you would back at your desktop, ensuring quick user adoption



After previewing the scanned document, users authenticate by selecting their Canon iW Document Manager or network username and password.



Right at the Canon imageRUNNER device, users have the ability to view their various cabinets and folders, create folders, and incorporate their paper documents into Canon iW Document Manager just as they would with electronic files at their PC.



After selecting the location, populate the index fields or use the defaults provided by iW Document Manager and store the document.

DEVICE COMPATIBILITY

For the latest supported e-mail servers, document management systems, network fax servers, and cost recovery systems, please visit:

<http://connectors.ecopy.com/Software-Alliance-Partners>

For the latest supported platforms for eCopy ShareScan, please visit:

<http://www.ecopy.com/support/platforms.htm>

System Requirements

- eCopy ShareScan® v4.0 or higher
- Canon iW Document Manager Enterprise or Workgroup Edition version 4.0 and version 4.1
- Canon iW Document Manager client version 4.0 and version 4.1 installed on the eCopy ShareScan Services Manager

© Copyright 1995-2009 Nuance Communications, Inc. All rights reserved. This program is protected by US and International copyright laws as described in the Help About. All other terms and products are trademarks or registered trademarks of their respective owners and are hereby acknowledged.